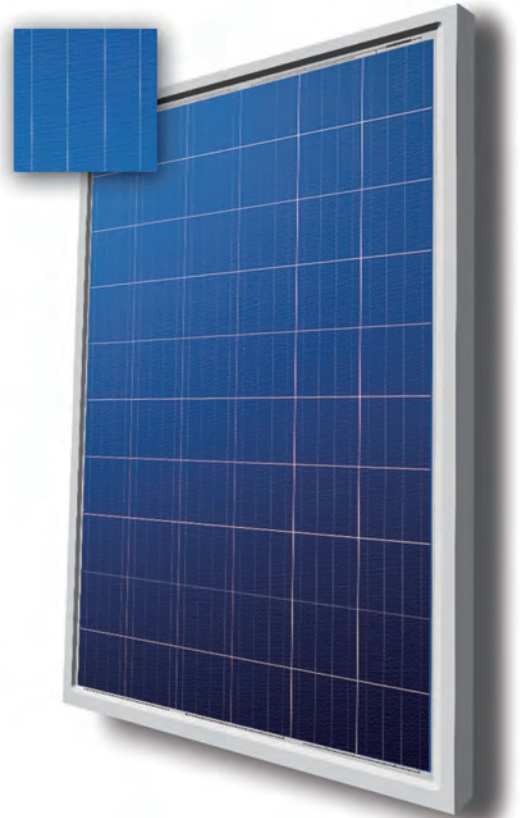


# TP660P

Peak Power: 250–265Wp

## MODULE CHARACTERISTICS

- Positive Power Tolerance: 0–+3%
- High Mechanical Load Strength:  
Product to Withstand Wind Loads (2400Pa) and  
Snow Loads (5400Pa) in Accordance with IEC 61215
- Fully Automated Production Line:  
Better Soldering  
Better Cell Spacing Tolerance:  $\pm 0.3\text{mm}$   
Better and More Consistent Product Quality
- Silver Frame and White Back Sheet  
Black Frame and Black Back Sheet Can be Selected  
Black Frame and White Back Sheet Can be Selected
- Four Busbar Cell



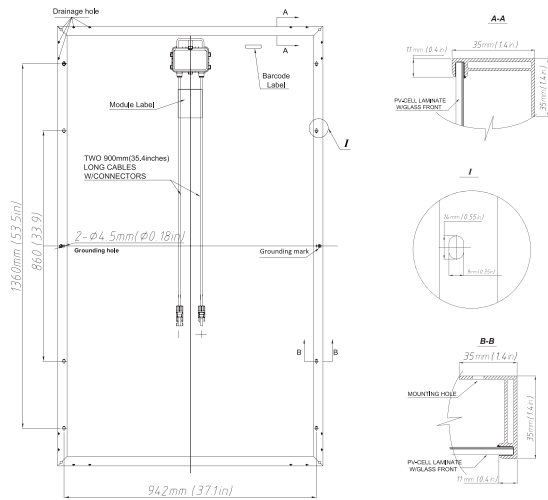
## ELECTRICAL PARAMETERS

MODEL	250	255	260	265
Maximum Power at STC(Pmax)	250W	255W	260W	265W
Voltage at Maximum Power (Vmpp)	30.5V	30.6V	30.7V	30.8V
Current at Maximum Power (Impp)	8.22A	8.36A	8.51A	8.62A
Open Circuit Voltage (Voc)	37.6V	37.7V	37.8V	37.9V
Short Circuit Current (Isc)	8.97A	9.06A	9.16A	9.25A
Module Efficiency $\eta$ m(%)	15.4	15.7	16.0	16.3
Power Tolerance	0–+3%			
Temperature Coefficient	Pmax	-0.44%/°C		
	Voc	-0.33%/°C		
	Isc	+0.05%/°C		
	NOCT	45 $\pm$ 2°C		

\* STC: 1000 w/m<sup>2</sup>, 25 °C, AM 1.5



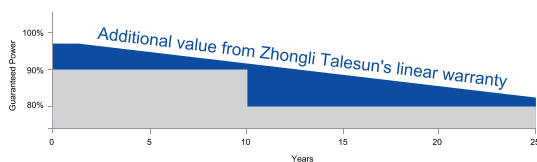
## TECHNICAL DRAWINGS



## OTHER PARAMETERS

Cell Type	Poly Crystalline
Cell Dimensions	156 × 156mm(6inch)
Cell Arrangement	60 (6 × 10)
Weight	18.5kg (40.8lbs)
Module Dimensions	1640 × 990 × 35mm(64.6 × 39.0 × 1.4inch)
Cable Length	900mm(35.4inch)
Cable Cross Section Size	4mm <sup>2</sup> (0.006sq.in)
Front Glass	3.2mm High Transmission, Tempered Glass
No. of Bypass Diodes	3/6
Packing Configuration	28pcs/Pallet, 854 pcs/40hq
Frame	Anodized Aluminium Alloy
Junction Box	IP65/ IP67

## LINEAR PERFORMANCE WARRANTY: 25 YEARS



## QUALITY WARRANTY

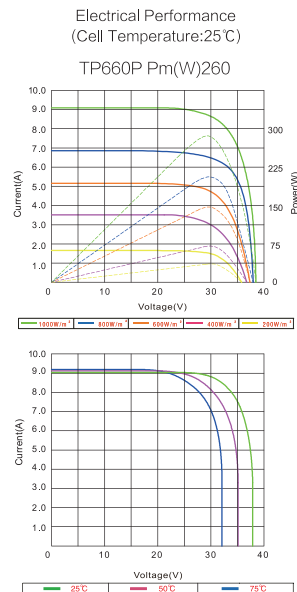
TALESUN guarantees that defects will not appear in materials and workmanship defined by IEC61215, IEC61730 and UL 1703 under normal installation, use and maintenance as specified in Talesun's installation manual for 10 years from the warranty starting date.

## Zhongli Talesun Solar Co., Ltd.

1# Talesun Road, Shajiang, Changshu, Jiangsu Province, P.R. China 215542  
 Email: sales@talesun.com Web: www.talesun.com Sales Hotline:+86 400 885 1098 TEL :+86 512 8235 5888 FAX:+86 512 8235 5888

## I-V CURVE

Output under different radiation and temperature conditions.



## OPERATING CONDITIONS

Maximum System Voltage	1000V/DC(IEC)
Operating Temp.	-40°C ~ +85°C
Maximum Series Fuse	15A
Static Loading	5400Pa
Conductivity at Ground	≤ 0.1Ω
Safety Class	II
Resistance	≥ 100MΩ
Connector	MC4 Compatible

## Performance as Set Forth Below:

Monocrystalline Solar Cell Modules:

- During the first year, TALESUN guarantees the nominal power output of the product will be no less than 97% of the labeled power output.
- From year 2 to year 24, the nominal power decline will be no more than 0.7%; by the end of year 25, the nominal power output will be no less than 80% of the labeled power output.

Polycrystalline Solar Cell Modules:

- During the first year, TALESUN guarantees the nominal power output of the product will be no less than 97.5% of the labeled power output.
- From year 2 to year 24, the nominal power decline will be no more than 0.7%; by the end of year 25, the nominal power output will be no less than 80.7% of the labeled power output.